

***Euoniticellus africanus* (female)**

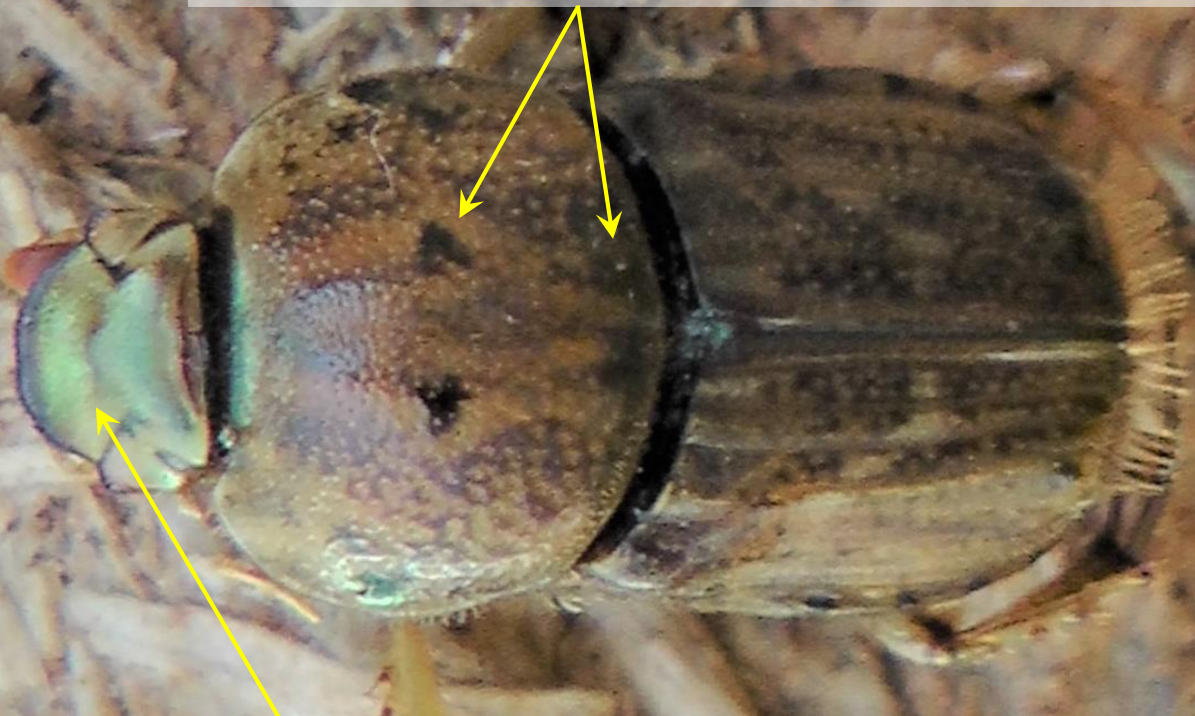


The head is quite flat for female *E. africanus*.
In contrast *E. pallipes* will have a distinctly raised ridge

1 mm

Russ Barrow

Characteristic dark spots on the pronotum. For *E. africanus* the pair of patches in the middle are usually larger and more distinct than those at the rear



The line (joint) indicated is visible but quite flat when viewed in profile

1 mm

Russ Barrow