

Euoniticellus pallipes (female)

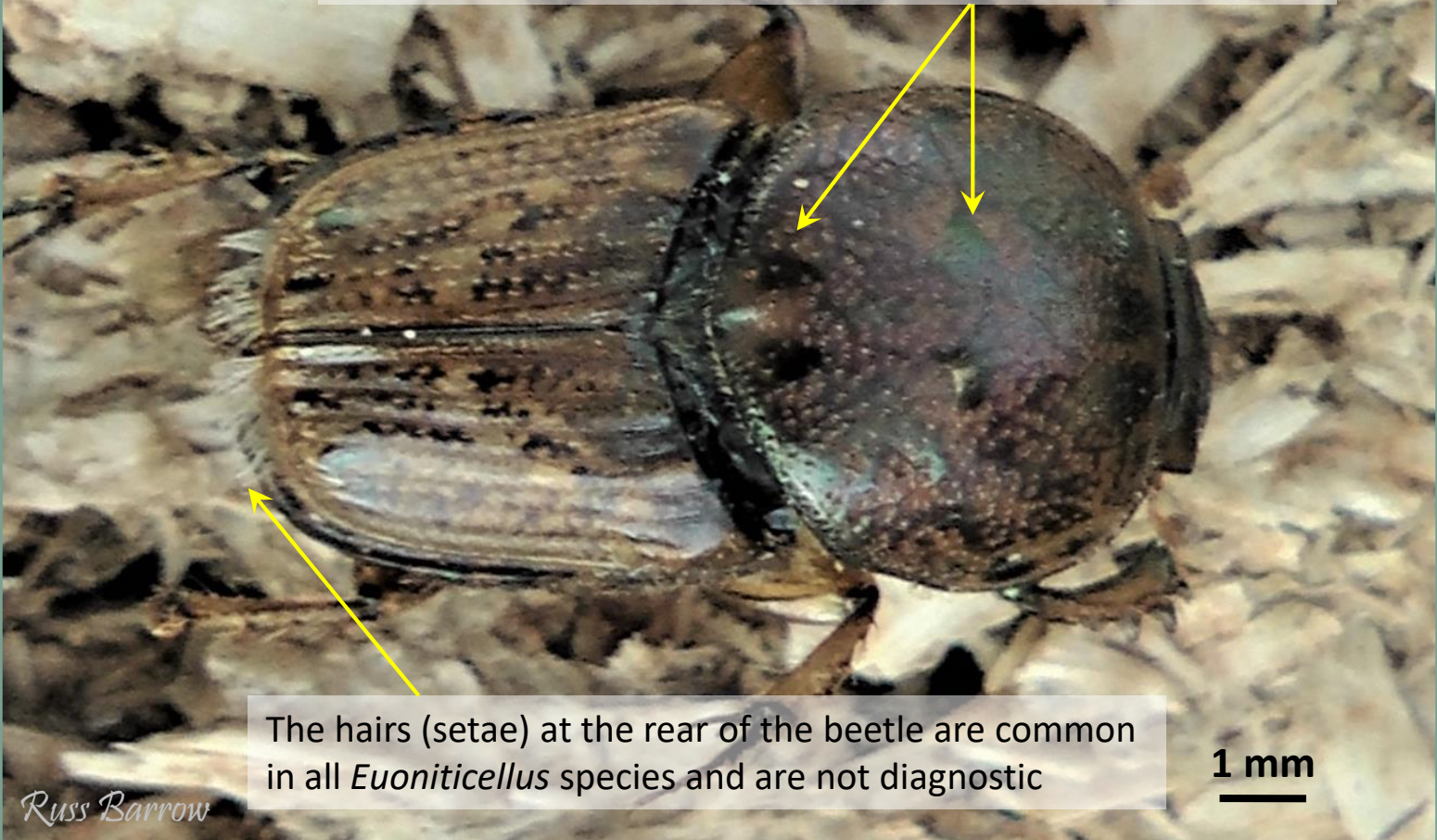
The head of the female *E. pallipes* has a distinctly raised ridge. In contrast, the head of *E. africanus* is flat in profile



E. pallipes is a brown to golden coloured beetle with darker markings

1 mm

Characteristic dark spots on the pronotum. *E. pallipes* has two distinct pairs of patches. The middle and rear patches are usually of comparable intensity



The hairs (setae) at the rear of the beetle are common in all *Euoniticellus* species and are not diagnostic

1 mm