

# What's in your dung?

A guide to dung beetle species in South West WA.



**DUNG  
BEETLE**

Ecosystem Engineers



REGIONAL GUIDE

**South West WA**

# South West WA

Dung beetle species that are commonly found in the region.

## Introduced



*Bubas  
bison*

Tunneler



*Euoniticellus  
fulvus*

Tunneler



*Euoniticellus  
intermedius*

Tunneler



*Euoniticellus  
pallipes*

Tunneler



*Onitis  
aygulus*

Tunneler



*Onitis  
alexis*

Tunneler



*Onthophagus  
binodis*

Tunneler

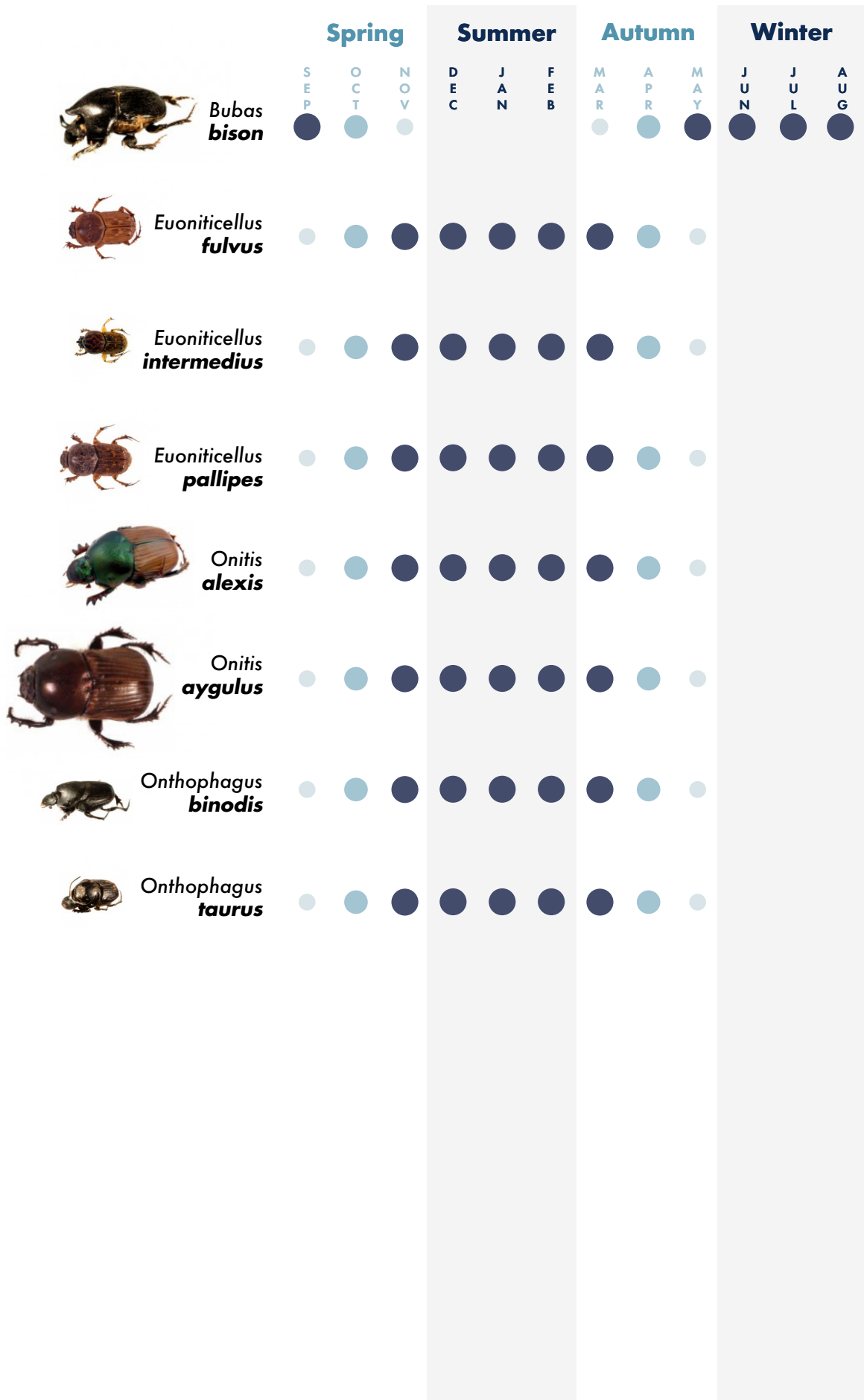


*Onthophagus  
taurus*

Tunneler

# Seasonal activity

When dung beetles are most likely to be found in dung (in your region)



# Bubas bison



Tunneler

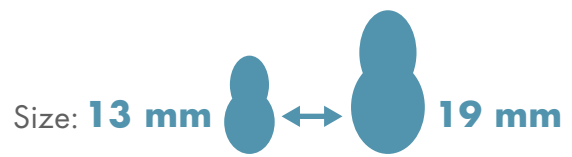
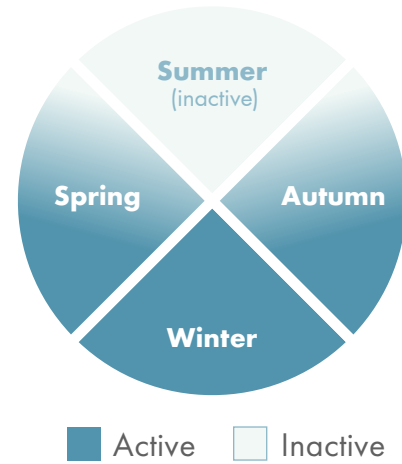
**Colour** shiny black

**Horns** horn on each side of head and horn on pronotum (male); distinct ridge on head between eyes and on pronotum (female)

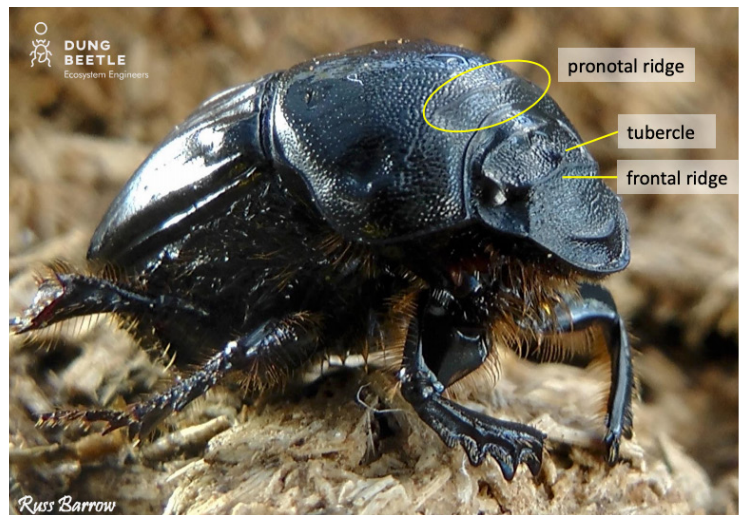
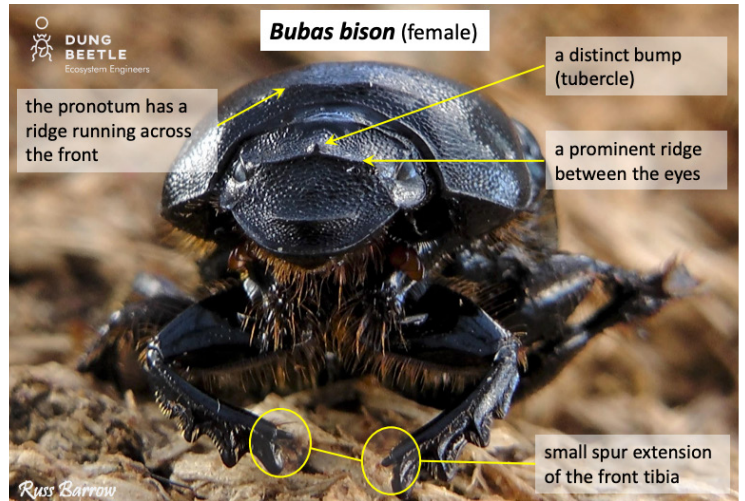
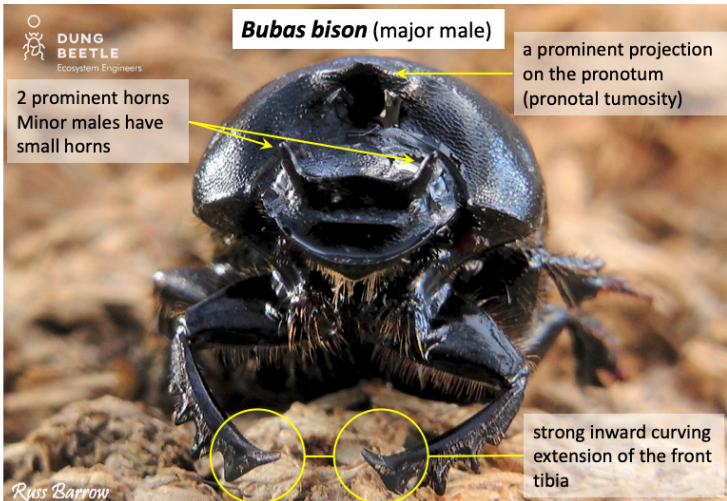
**Flight time** dusk and dawn

**Distribution** WA, SA, VIC, southern NSW

## Seasonal activity



Burrowing depth  
**20 – 65 cm**



# Euoniticellus fulvus



Tunneler

**Colour** yellow to medium brown, no speckling on pronotum. Wing covers may have dark brown patches but no speckling

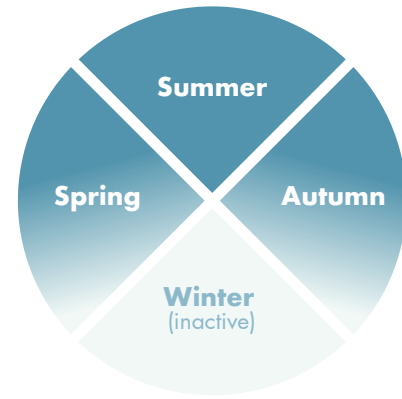
**Horns** none; males have two ridges at front of head but females have none

**Flight time** day

**Distribution** WA, SA, VIC, NSW, TAS

**Similar species** Similar to other species of *Euoniticellus*, but its small size and lack of markings set it apart.

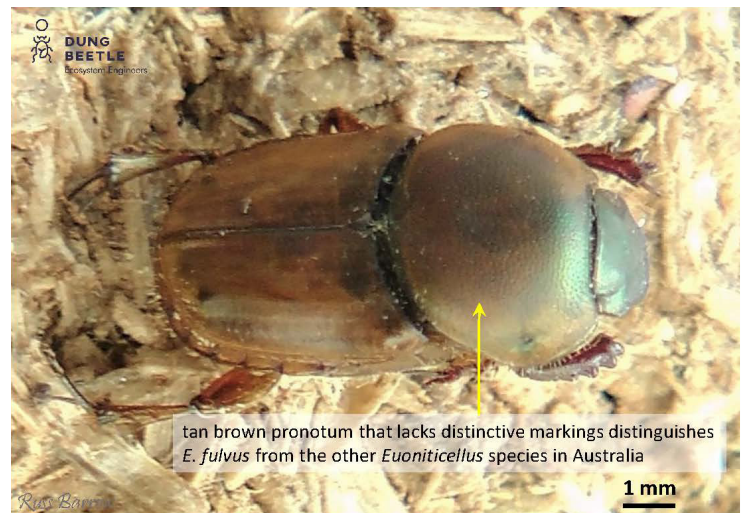
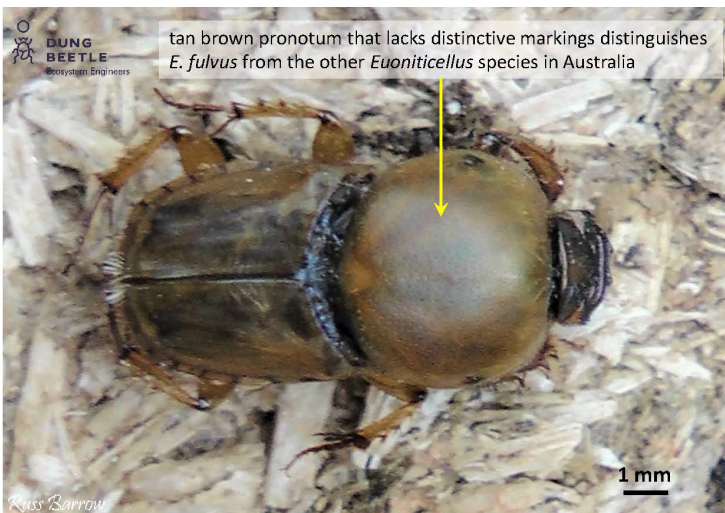
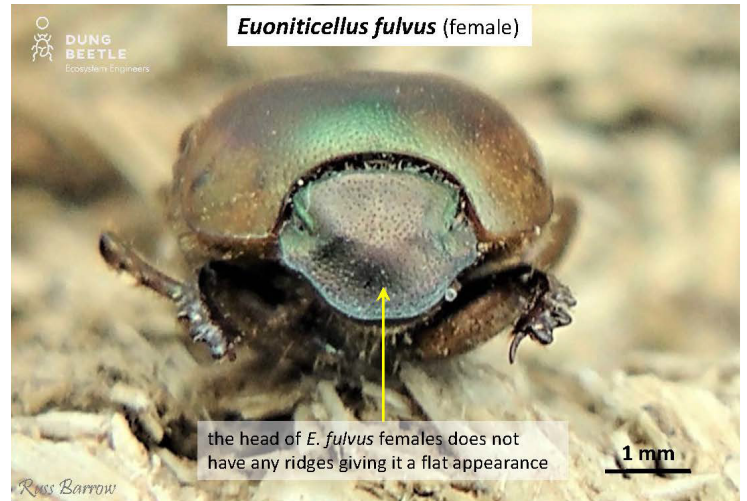
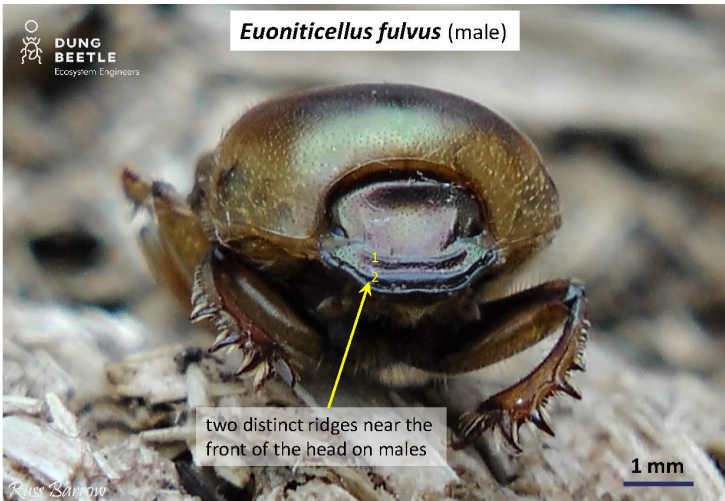
Seasonal activity



■ Active □ Inactive

Size: 8 mm ↔ 12 mm

Burrowing depth  
17 – 23 cm



# *Euoniticellus intermedius*



Tunneler

**Colour** yellow–brown, with diamond pattern on pronotum

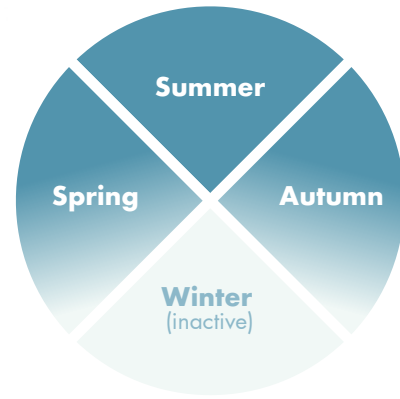
**Horns** males have a blunt horn in middle of head; females have a ridge between the eyes

**Flight time** day

**Distribution** throughout Australia except very dry and southernmost regions

**Similar species** similar to other species of *Euoniticellus*, but the distinctive markings on pronotum differentiate it from other species.

Seasonal activity

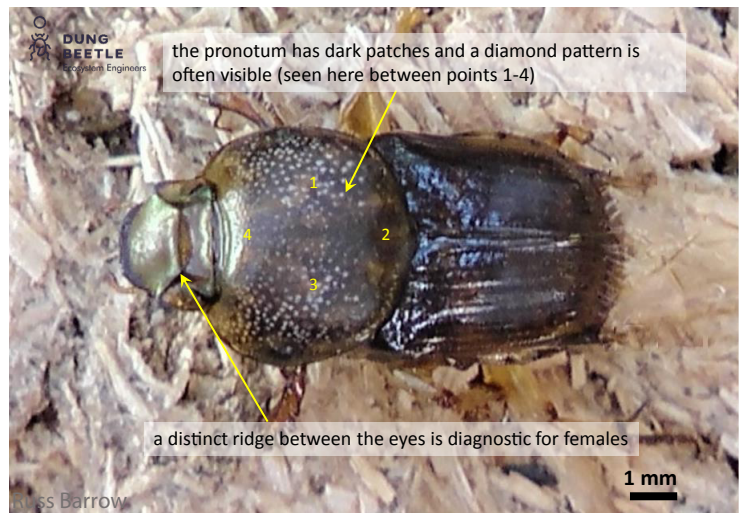
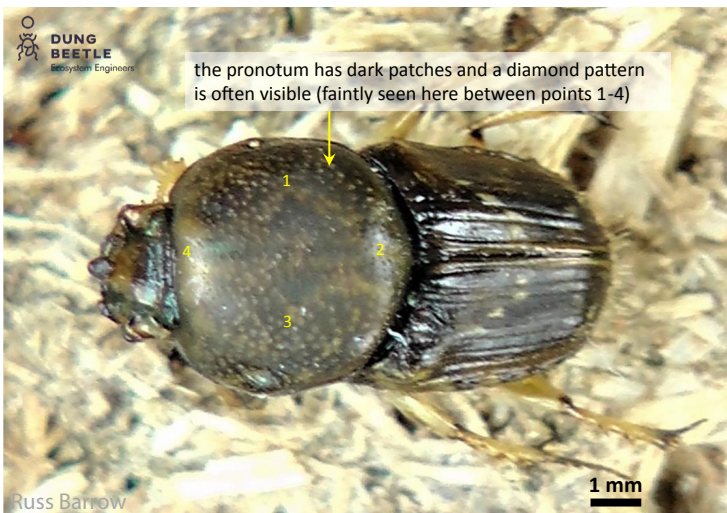
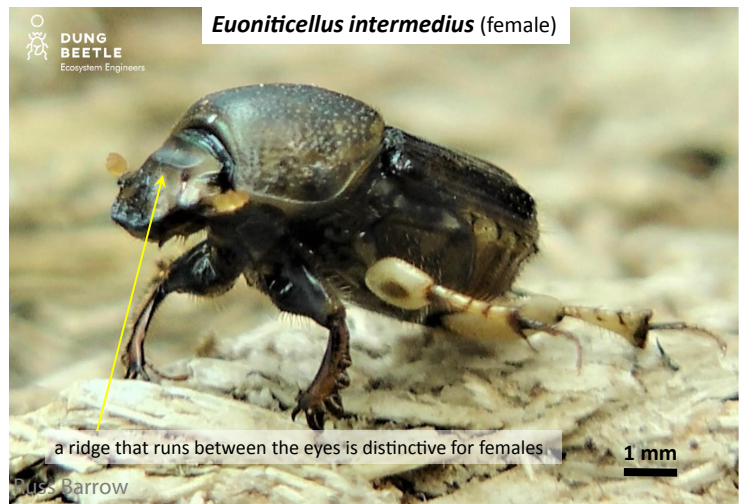
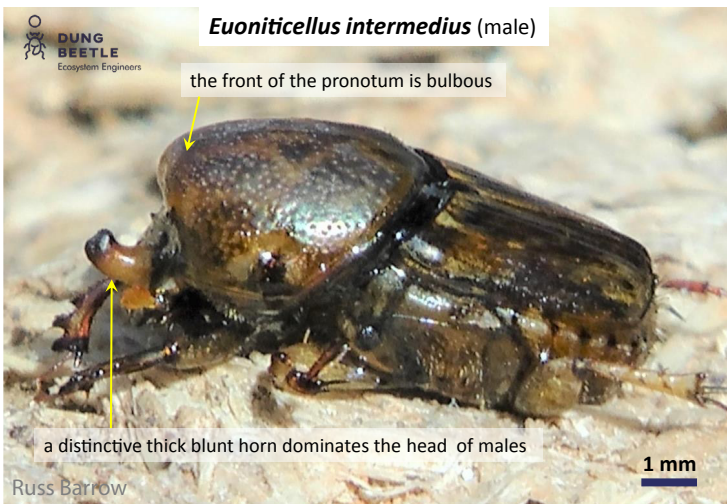


Active Inactive

Size: 7 mm ↔ 9 mm

Burrowing depth

11 – 19 cm



# Euoniticellus pallipes



## Seasonal activity



■ Active □ Inactive

## Tunneler

**Colour** light to medium brown with speckling over pronotum and wing covers. 2–3 pairs of dark patches in centre of pronotum

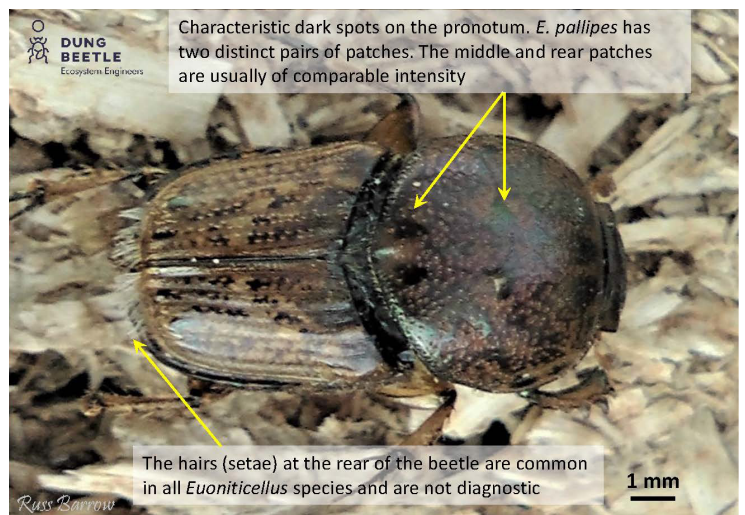
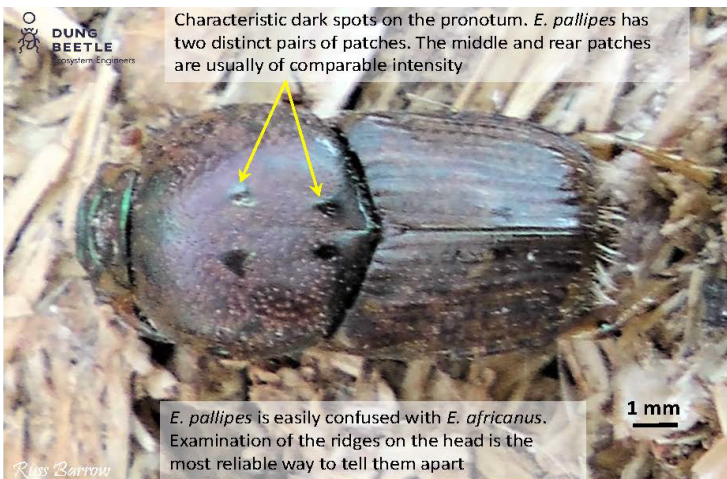
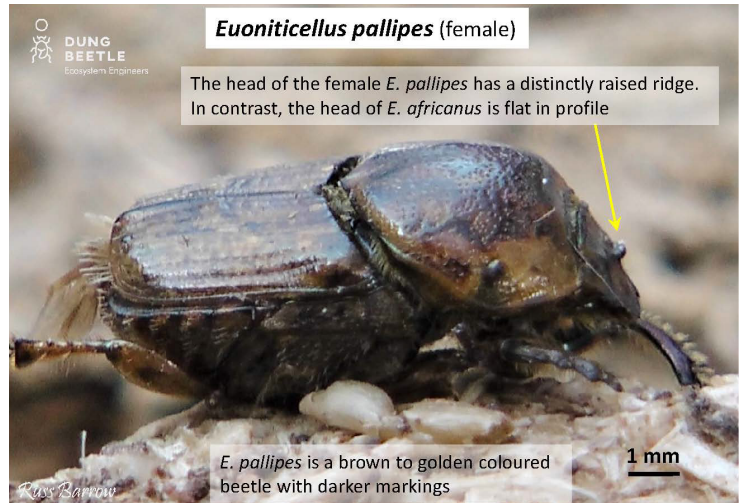
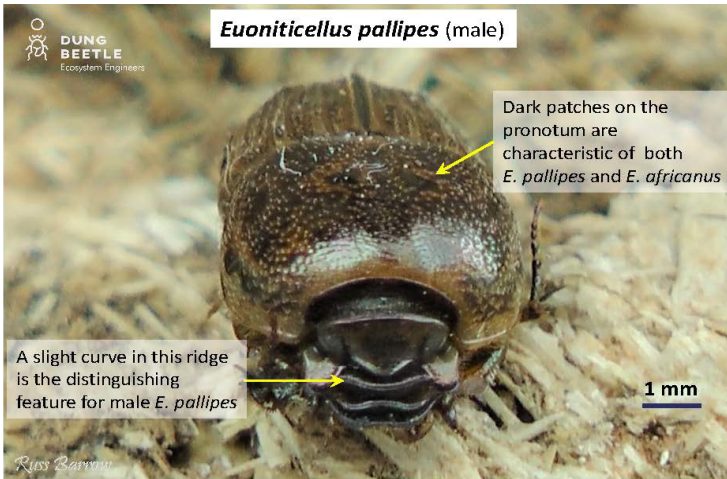
**Horns** none; arched ridge between eyes in males, small ridge in females

**Flight time** day

**Distribution** WA, SA, VIC, NSW

**Similar species** *E. pallipes* female has a small ridge between eyes, but *E. africanus* female has none. *E. pallipes* male has shallowly arched ridge between eyes, which is strongly curved in male *E. africanus*.

Size: 9 mm 12 mm



# Onitis alexis



Tunneler

**Colour** green/coppery pronotum, light brown wing covers

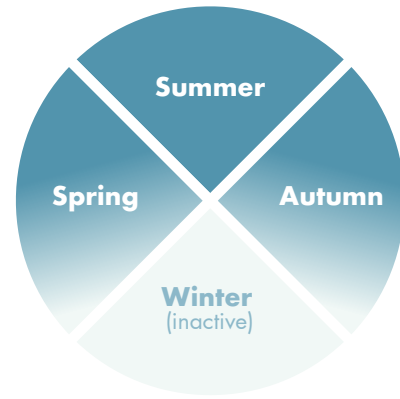
**Horns** both sexes have a ridge midway between eyes and front of head; female has distinct bump at back of head

**Flight time** dusk and dawn

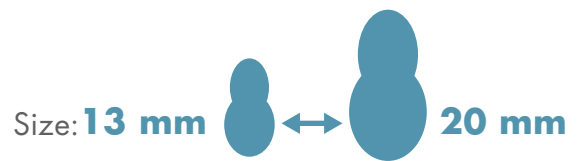
**Distribution** all of Australia except TAS

**Similar species** *Onitis aygulus* is larger and has an unequal double spur on hind femur of male (single spur in *O. alexis*).

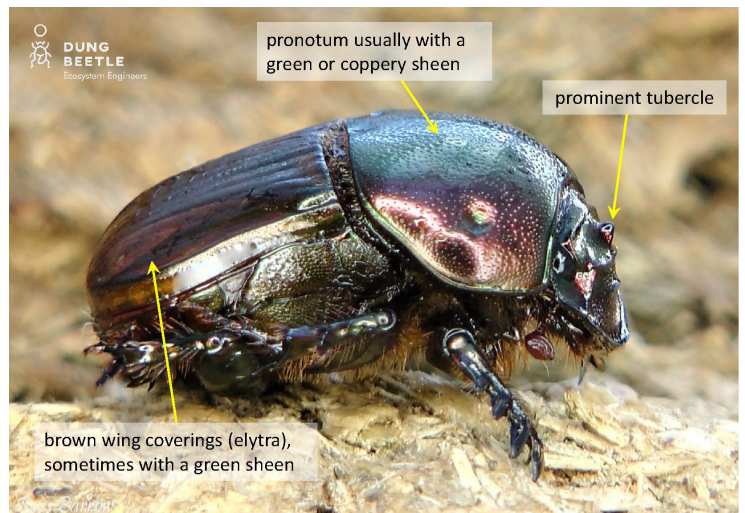
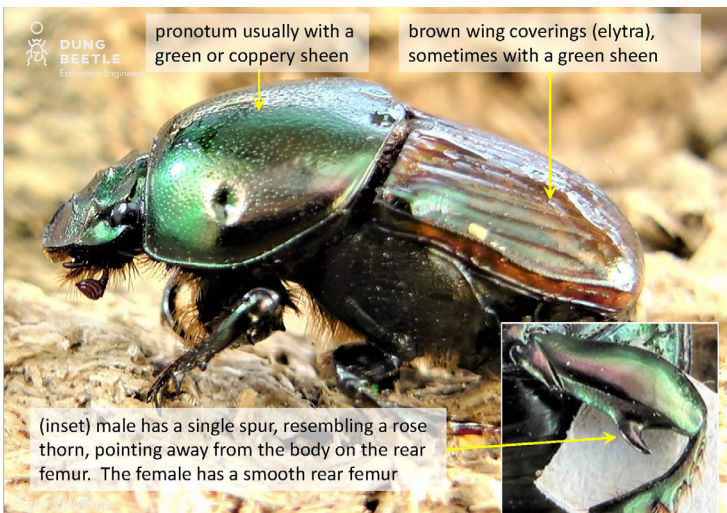
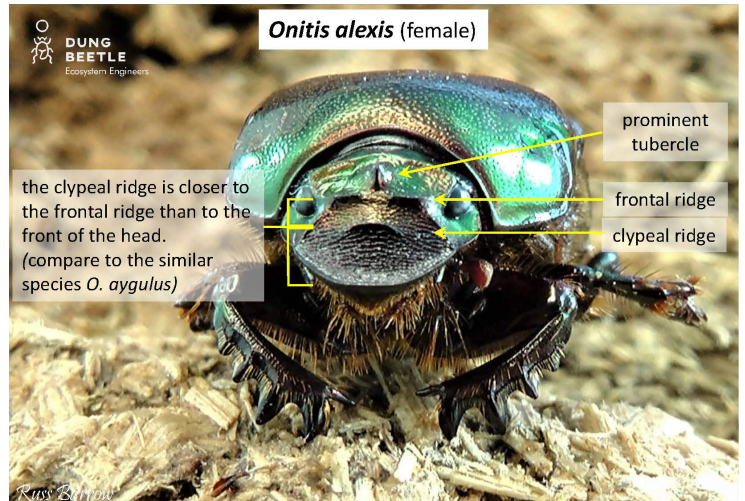
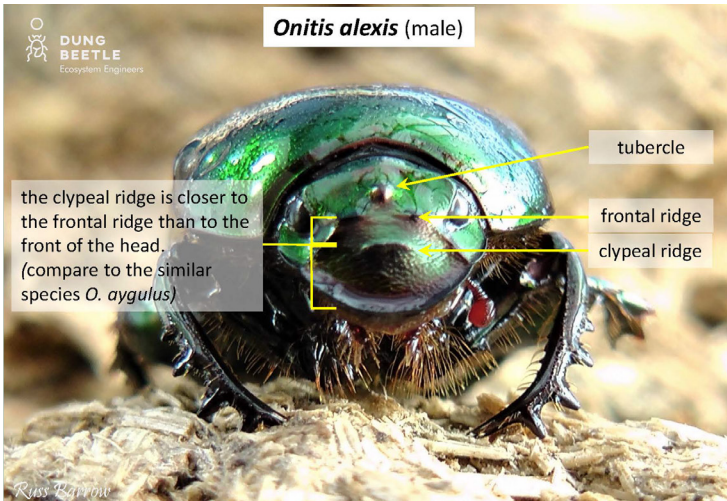
Seasonal activity



Active Inactive



Burrowing depth  
**20 – 65 cm**





# Onitis aygulus



Tunneler

**Colour** dark brown pronotum with coppery or green sheen, light brown wing covers

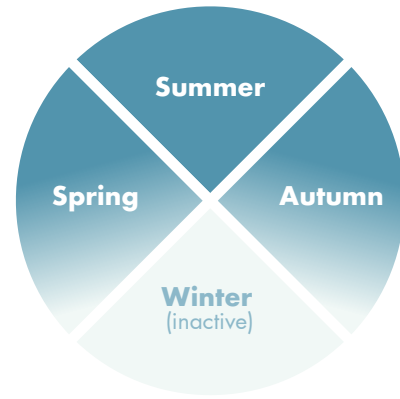
**Horns** female has distinct bump at back of head and a ridge close to front of head

**Flight time** dusk and dawn

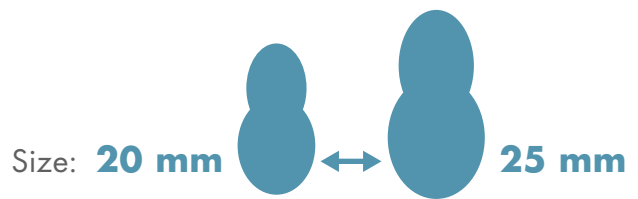
**Distribution** WA, SA, VIC, NSW

**Similar species** *Onitis alexis* is similar but smaller and has a single curved spur on hind femur of male (unequal double spur in *O. aygulus*).

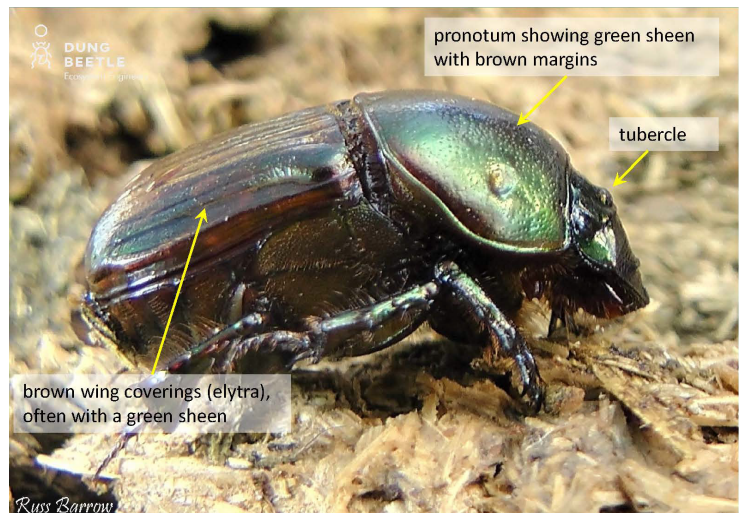
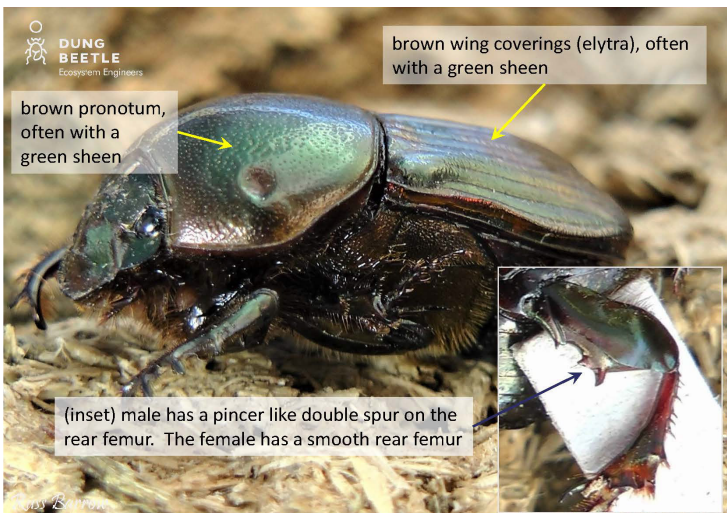
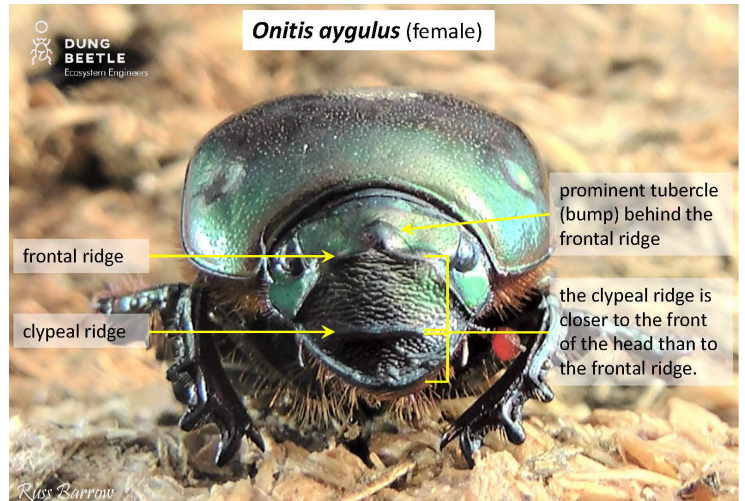
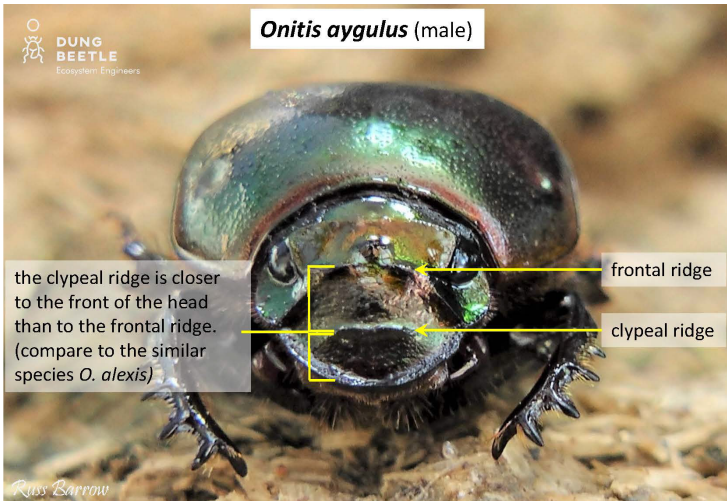
Seasonal activity



■ Active □ Inactive



Burrowing depth  
**5 – 16 cm**



# Onthophagus binodis



Tunneler

**Colour** matt black

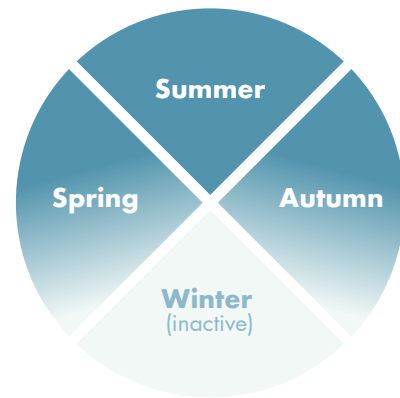
**Horns** large lobe at front of pronotum (males), smaller in females

**Flight time** day

**Distribution** WA, SA, VIC, NSW, TAS, south-east QLD

**Similar species** female *O. taurus* are similar to female *O. binodis*, but *O. taurus* females are shinier and the front of the pronotum is rounded.

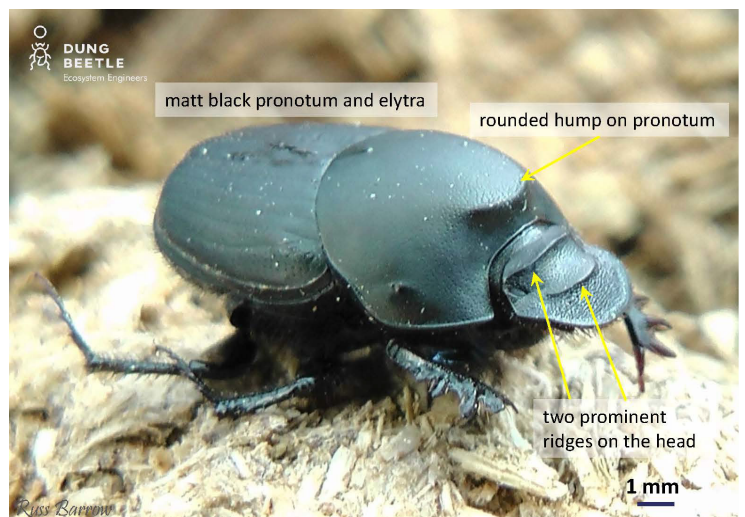
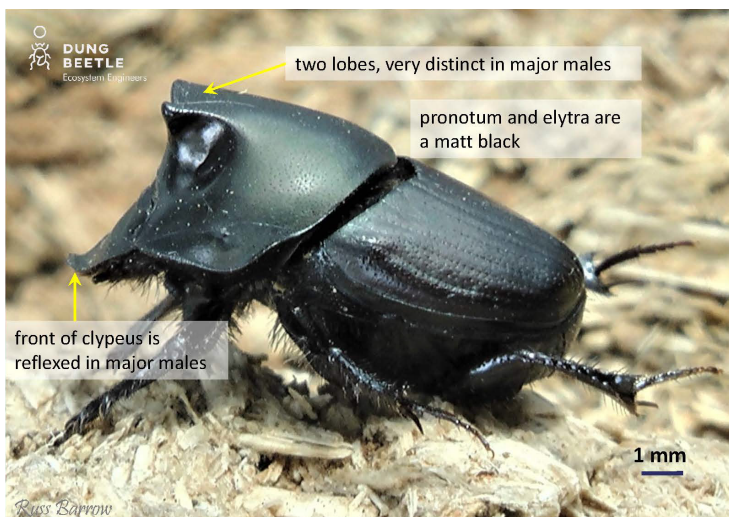
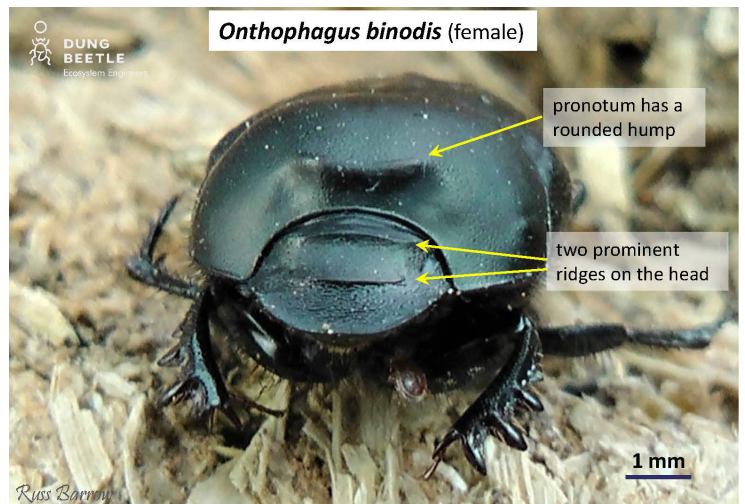
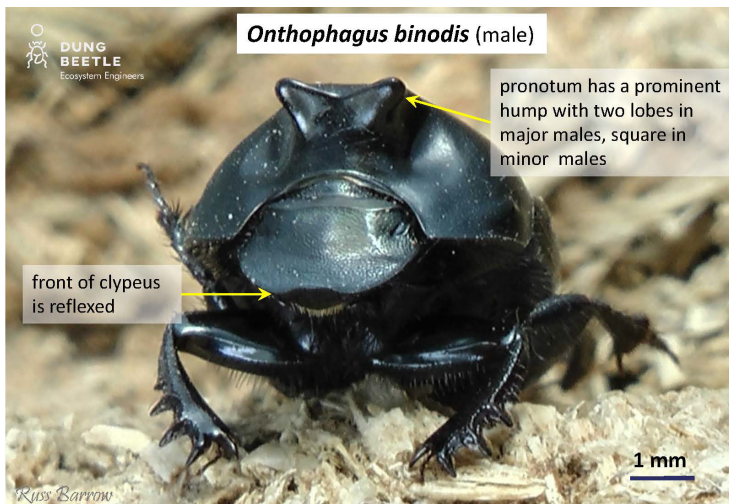
Seasonal activity



■ Active □ Inactive

Size: 11 mm ↔ 13 mm

Burrowing depth  
17 – 23 cm



# Onthophagus taurus



Tunneler

**Colour** shiny black

**Horns** males have long, curved horns; females have none

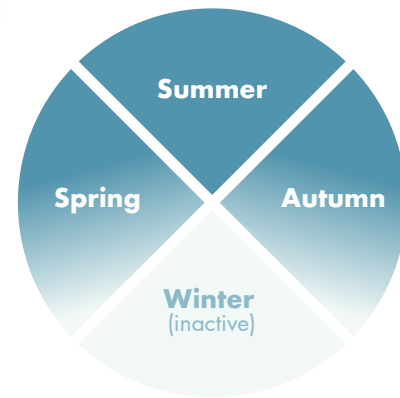
**Flight time** day

**Minor** minor males have very short horns extending upward from back of head

**Distribution** WA, SA, VIC, TAS, NSW

**Similar species** female *O. binodis* are similar to female *O. taurus*, but *O. taurus* females are shinier and the front of the pronotum is rounded, not lobed.

Seasonal activity

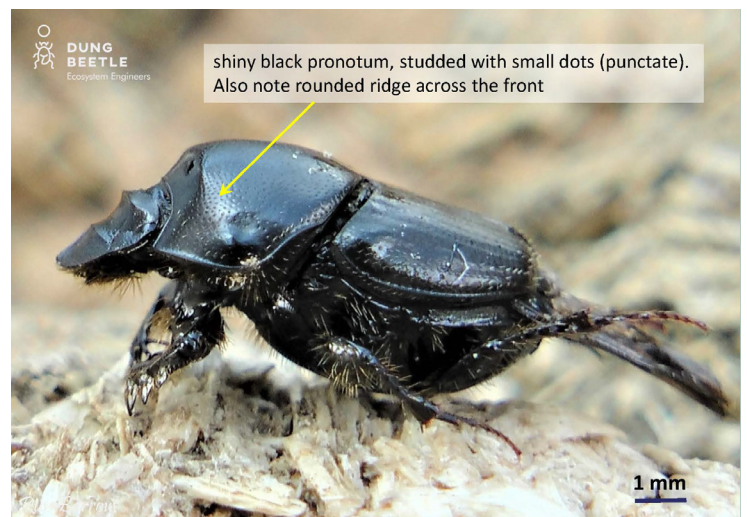
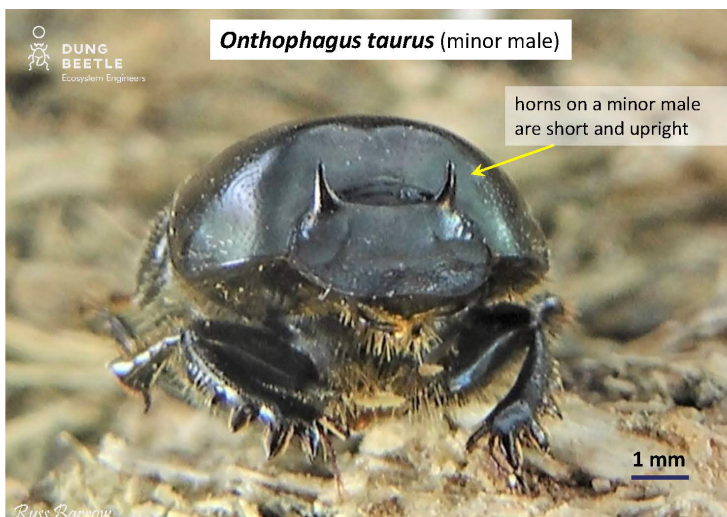
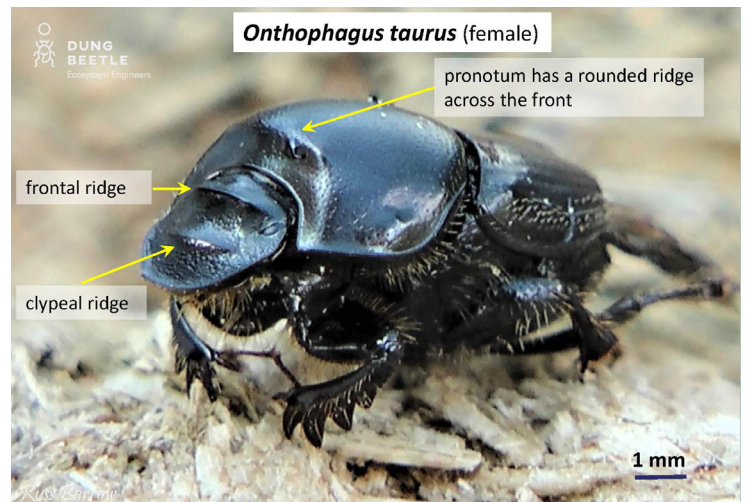
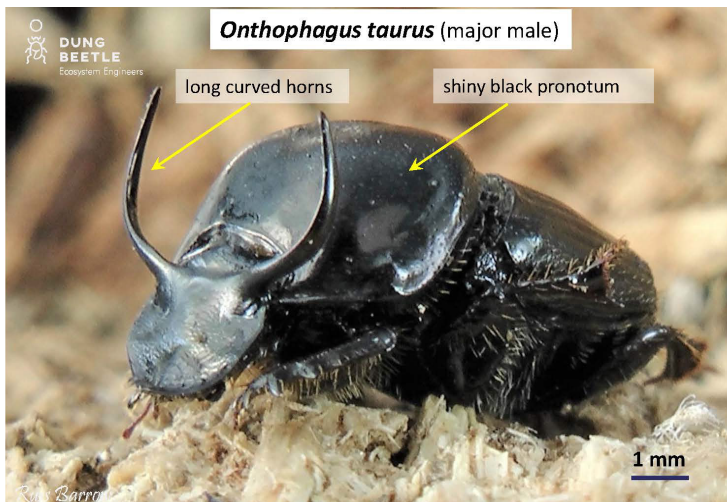


■ Active □ Inactive

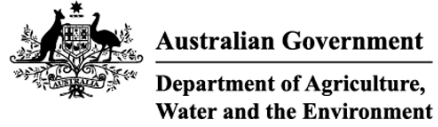
Size: 8 mm ↔ 10 mm

Burrowing depth

8 – 13 cm



This project is supported by Meat & Livestock Australia, through funding from the Australian Government Department of Agriculture and Water Resources as part of its Rural R&D for Profit programme.



**DUNG BEETLE**  
Ecosystem Engineers

[www.dungbeetles.com.au](http://www.dungbeetles.com.au)