

What's in your dung?

A guide to dung beetle species in North & Cradle Coast Authority.



**DUNG
BEETLE**

Ecosystem Engineers



REGIONAL GUIDE

**North Tasmania
& Cradle Coast
Authority**

North Tasmania & Cradle Coast Authority

Dung beetle species that are commonly found in the region.

Introduced



*Euoniticellus
fulvus*

Tunneler



*Geotrupes
spiniger*

Tunneler



*Onthophagus
binodis*

Tunneler



*Onthophagus
taurus*

Tunneler

Natives



*Onthophagus
australis*

Note: Up to 500 native and non-native species of dung beetles exist in Australia.
This guide is limited to species you are most likely to find in this region.

Euoniticellus fulvus



Tunneler

Colour yellow to medium brown, no speckling on pronotum. Wing covers may have dark brown patches but no speckling

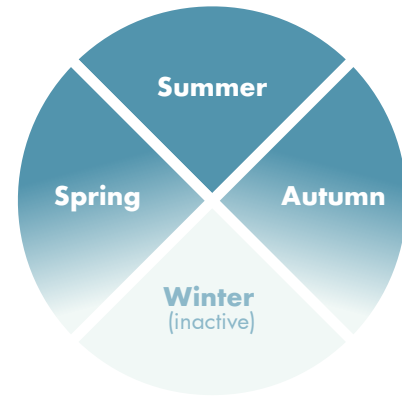
Horns none; males have two ridges at front of head but females have none

Flight time day

Distribution WA, SA, VIC, NSW, TAS

Similar species Similar to other species of *Euoniticellus*, but its small size and lack of markings set it apart.

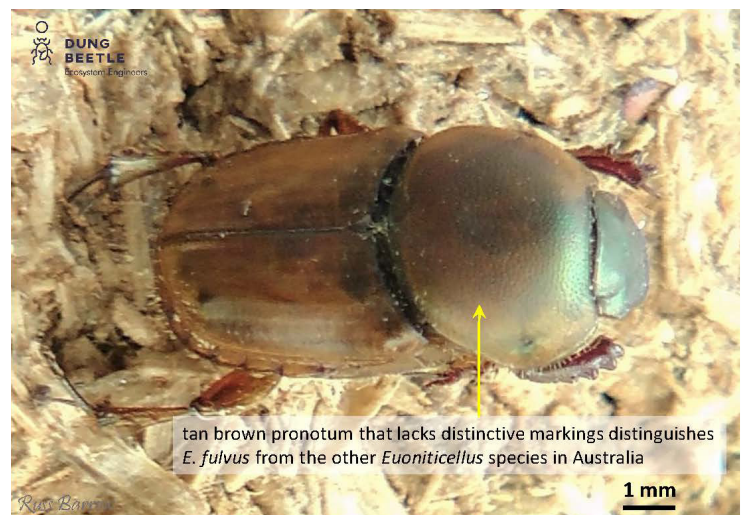
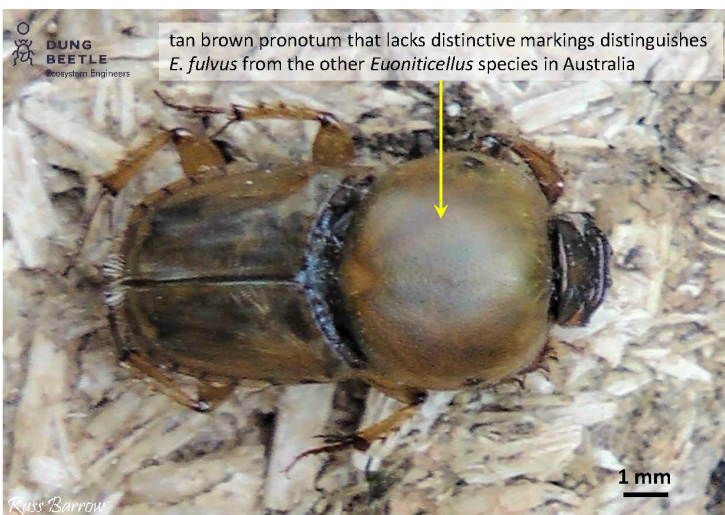
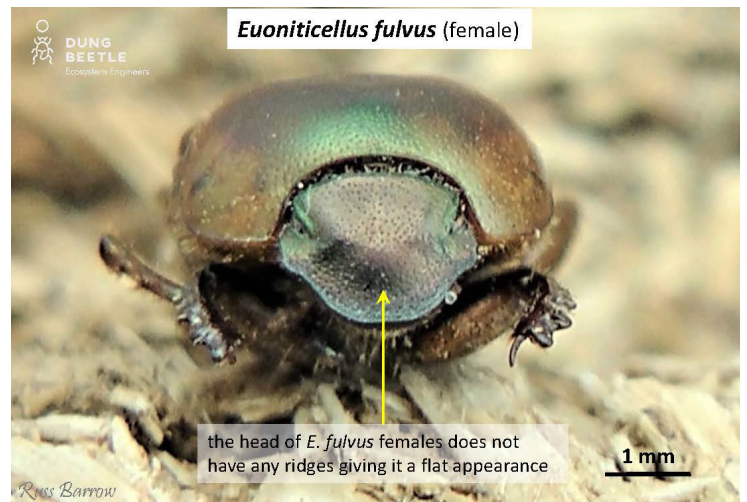
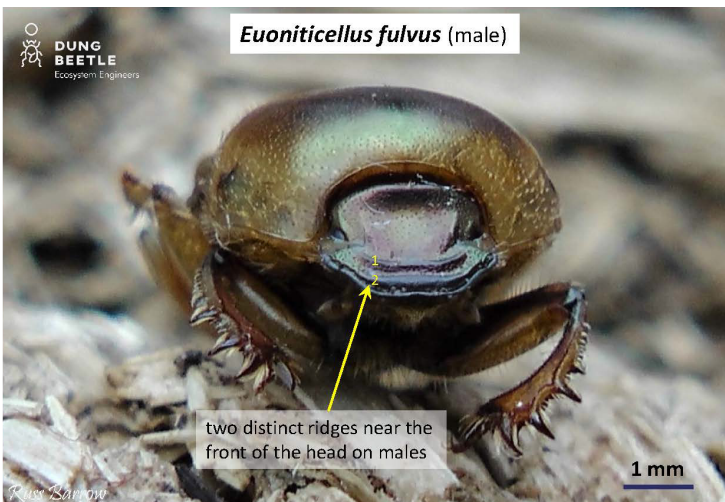
Seasonal activity



Active Inactive

Size: 8 mm ↔ 12 mm

Burrowing depth
17 – 23 cm



Geotrupes spiniger

Tunneler

Colour shiny black with metallic blue/ purplish underside

Horns none

Flight time dusk and dawn

Distribution TAS, VIC, southeast and northeast NSW

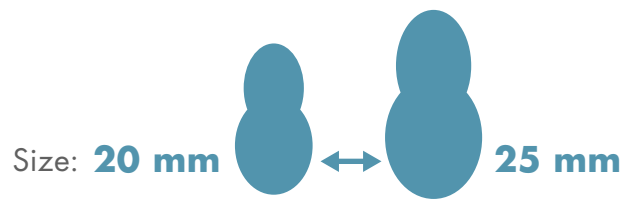
Similar species unlikely to be confused with any other species of dung beetle found in Australia.



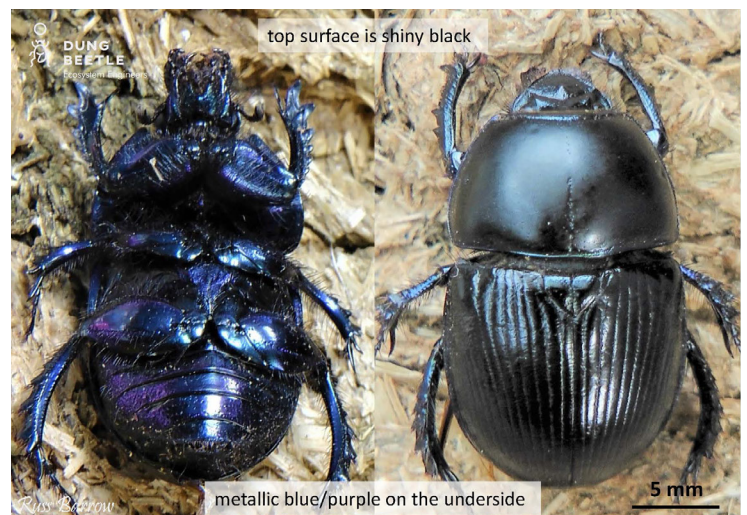
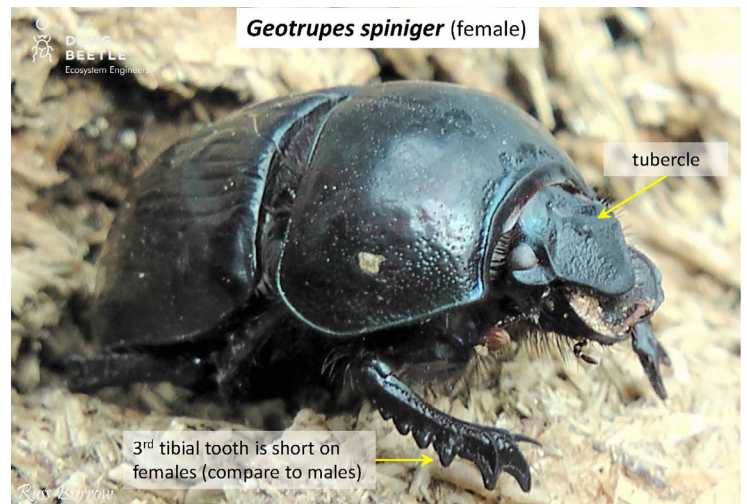
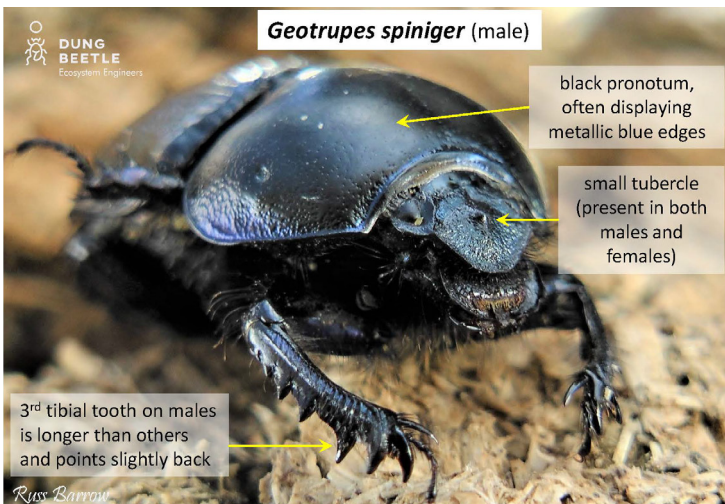
Seasonal activity



■ Active □ Inactive



Burrowing depth
20 – 28 cm



Onthophagus binodis



Tunneler

Colour matt black

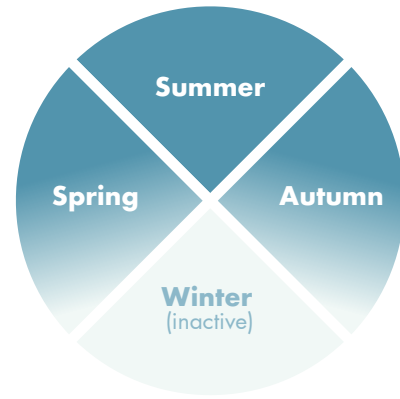
Horns large lobe at front of pronotum (males), smaller in females

Flight time day

Distribution WA, SA, VIC, NSW, TAS, south-east QLD

Similar species female *O. taurus* are similar to female *O. binodis*, but *O. taurus* females are shinier and the front of the pronotum is rounded.

Seasonal activity

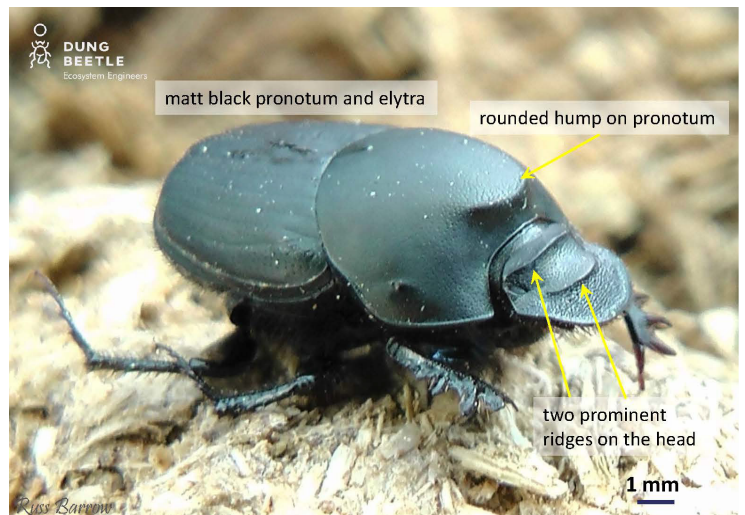
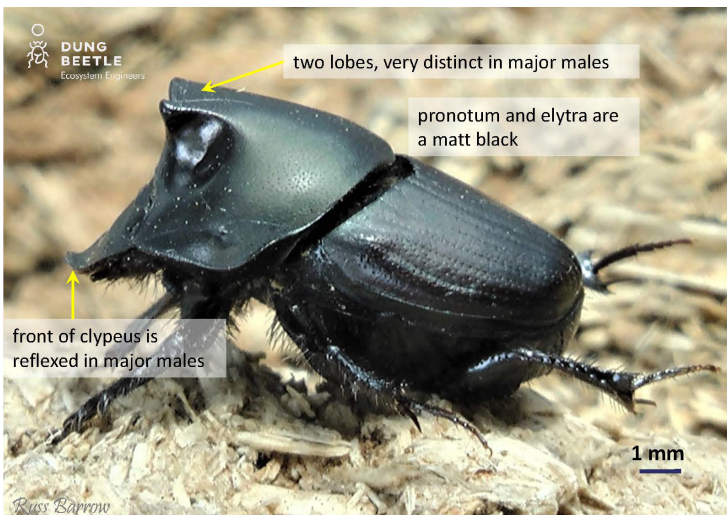
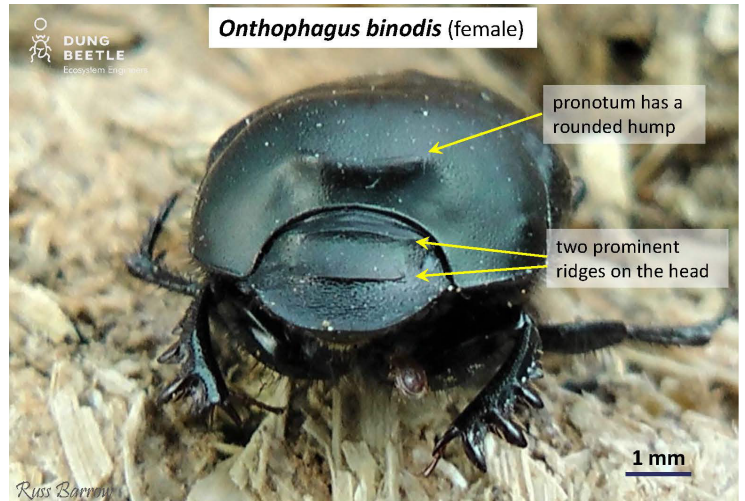
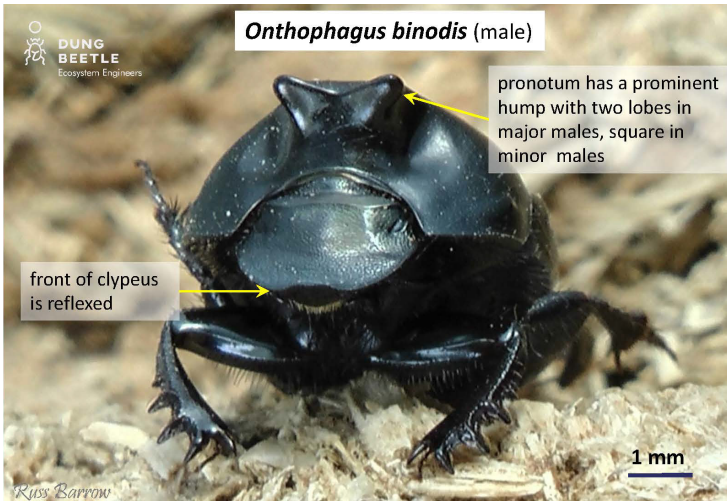


■ Active □ Inactive

Size: 11 mm ↔ 13 mm

Burrowing depth

17 – 23 cm



Onthophagus taurus



Tunneler

Colour shiny black

Horns males have long, curved horns; females have none

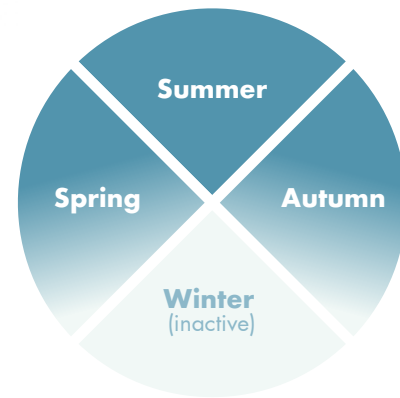
Flight time day

Minor the minor males have very short horns extending upward from back of head

Distribution WA, SA, VIC, TAS, NSW

Similar species female *O. binodis* are similar to female *O. taurus*, but *O. taurus* females are shinier and the front of the pronotum is rounded, not lobed.

Seasonal activity

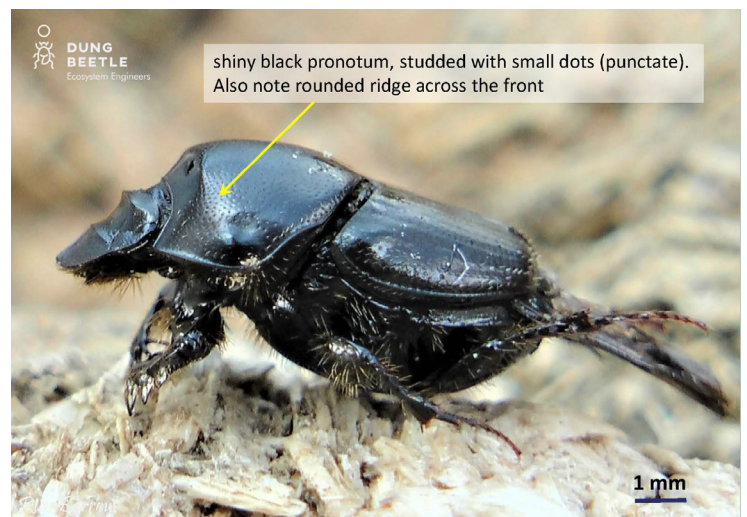
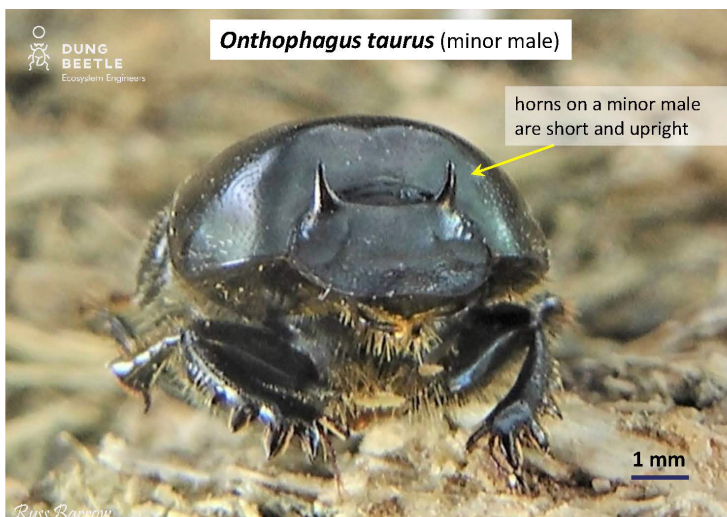
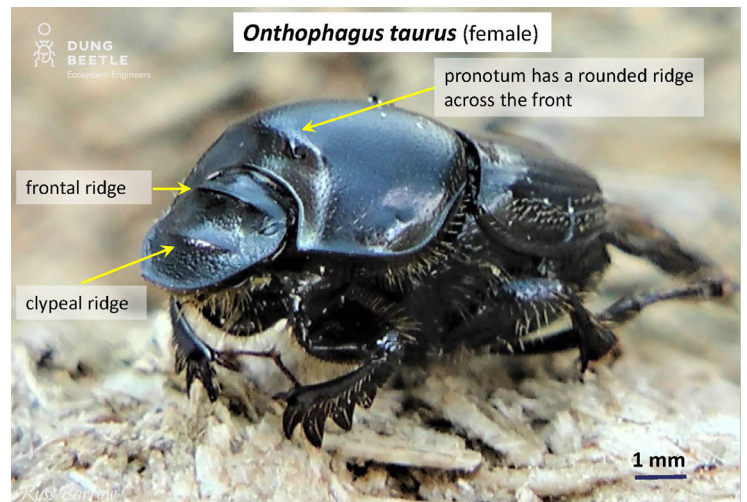
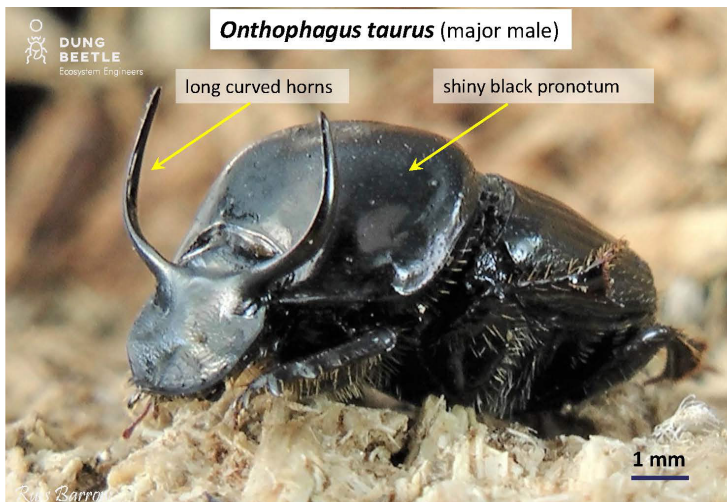


Active Inactive

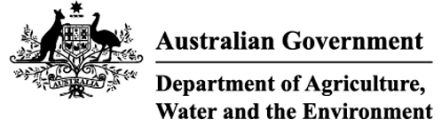
Size: 8 mm ↔ 10 mm

Burrowing depth

8 – 13 cm



This project is supported by Meat & Livestock Australia, through funding from the Australian Government Department of Agriculture and Water Resources as part of its Rural R&D for Profit programme.



DUNG BEETLE
Ecosystem Engineers

www.dungbeetles.com.au