

## What you need to do:

- Step 1** Collect dung
- Step 2** Take a dung quality sample and make a report
- Step 3** Weigh and bag four 1 kg lots of dung



### 1 Collect a local dung source



- ✓ Fresh dung
- ✓ 'Drug free'
- ✓ Avoid insect contaminants



Collect enough to make four 1 kg dung pats (per sampling site)

Lid to keep out insects and keep dung moist

### 2 **Immediately** after collecting dung, take a 'dung quality' subsample

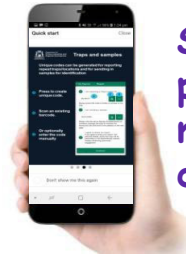
Fill a 70 mL jar ¾ full of dung...



...stick one **Dung source** label on the jar using barcode label provided...



...record details with MyDungBeetle™ Reporter app



See over page for more details

...then simply freeze sample until ready to mail to lab!

### 3 Weigh and bag **four** 1 kg lots of dung

Scoop 1 kg of dung into foil tray...



OK to line tray with muslin cloth

(+/- 10 grams OK)

Use a battery-powered balance

... and then wrap dung in muslin cloth and secure with a cable tie or use the mesh bag if provided.



Remember you need 4 x 1 kg lots of dung per sampling site (one for each trap)

Keep fresh

Use within 24 hrs



20 L bucket with lid

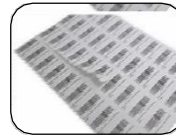
## 2 Continued from previous page:



+



Stick label on jar using barcode label provided....



Make sure to keep rest of label batch...


(for use with 1 kg dung batches in field)

## Submit report using MyDungBeetle™ Reporter

Download **free** App from store

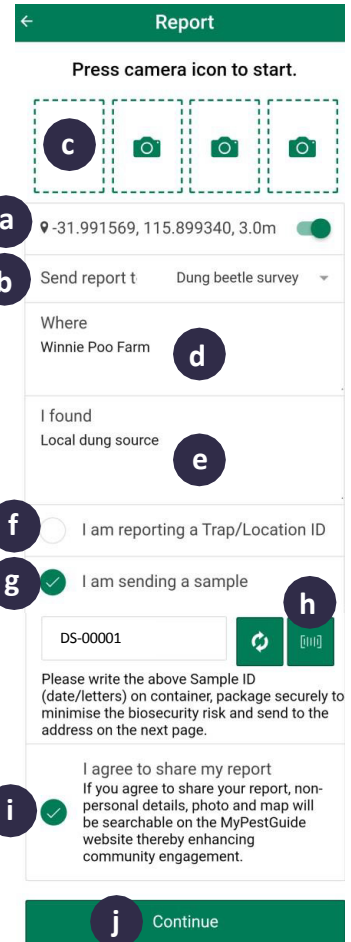


Open the App. Select the (+) symbol, then:

- Check **GPS** location is turned on (automatic).
- Select '**Dung beetle survey**' from the drop-down list.
- Press the top left camera icon. Select '**Take Photo**'. Take a photo of the area that the dung source came from (not essential – OK to have no photo in this case).
- In the box labelled '**Where**', write the name of the farm.
- In the box labelled '**I found**', write "**Dung source**".
- In this case, **skip** 'I am reporting a Trap/Location ID'.
- Select '**I am sending a sample**'.
- When it appears, **press** the  icon, focus the camera on the '**Dung source**' barcode and wait for barcode number to appear in the window. Check that the number on the app matches the number on the label.
- Select '**I agree to share my report**'.
- Press '**Continue**'. Check your '**State**', '**Email**' and '**Mobile**' details are correct then press '**Send**'.



Department of  
Primary Industries and  
Regional Development



The screenshot shows the app's 'Report' screen. It includes a camera icon to start, a location field (Winnie Poo Farm), a 'Where' field, an 'I found' field (Local dung source), and radio buttons for 'I am reporting a Trap/Location ID' and 'I am sending a sample'. A sample ID field (DS-00001) is visible, along with a barcode icon. At the bottom, there is a 'Continue' button.



Then freeze the dung sample as soon as you can...

... when you have a few batches together, send to lab for processing

*Send to your university partner or arrange a collection by them.*